



中国—马来西亚  
钦州产业园区  
CHINA-MALAYSIA  
QINZHOU INDUSTRIAL PARK

# 钦 州 产业 园 区

中国—马来西亚

CHINA—MALAYSIA  
QINZHOU INDUSTRIAL PARK

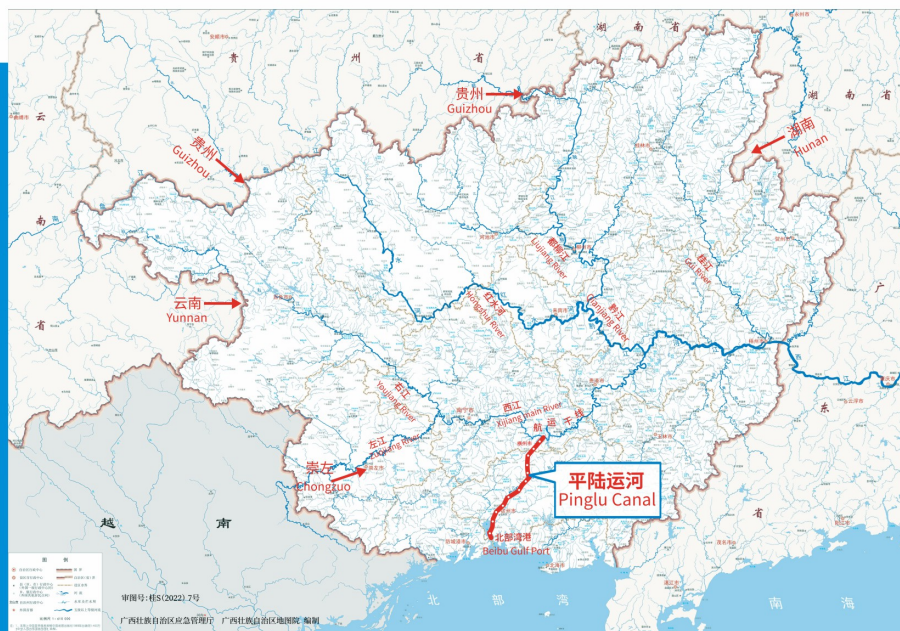
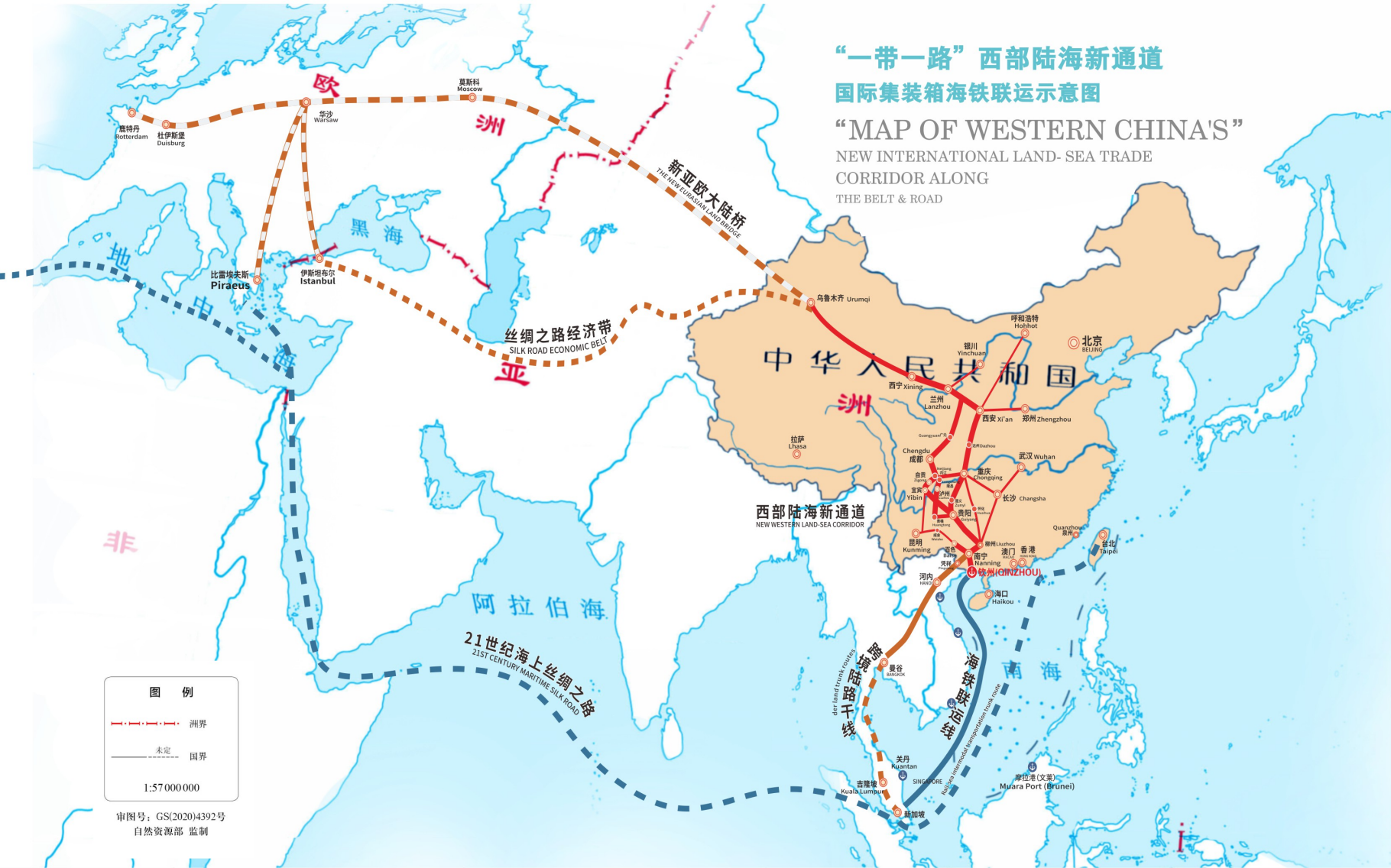


大胆试 大胆闯 自主改

BOLD ATTEMPTS,  
DARING VENTURES,  
AND INDEPENDENT REFORMS

“一带一路”西部陆海新通道  
国际集装箱海铁联运示意图

“MAP OF WESTERN CHINA'S  
NEW INTERNATIONAL LAND-SEA TRADE  
CORRIDOR ALONG  
THE BELT & ROAD



平陆运河  
PINGLU CANAL

72.7  
billion

134.2  
kilometers

89  
million tons

The Pinglu Canal forms the backbone of the New International Land-Sea Trade Corridor. With a total length of 134.2 kilometers, it starts from the Pingtang River Estuary of Xijin Reservoir in Hengzhou County-level City, Nanning, passes through Luwu Town, Lingshan County, Qinzhou, and joins the Beibu Gulf along the Qinjiang River. Constructed according to the standards of class I inland waterways, the Pinglu Canal boasts a designed one-way annual capacity of 89 million tons and allows navigation for 5,000-ton vessels. The total investment it requires is estimated at RMB 72.7 billion. Construction began in August 2022 and is scheduled to be completed by the end of 2026, lasting for 52 months. After the completion of the Pinglu Canal, the distance from Nanning via the canal to the Qinzhou Port will be only 291 kilometers, which is 563 kilometers shorter than the original inland sailing distance in Guangxi.

## 中国—马来西亚钦州产业园区

### China-Malaysia Qinzhou Industrial Park

Established in 2012 with the approval of the State Council, China-Malaysia Qinzhou Industrial Park has a planned area of 55 square kilometers and is the third international park jointly built by Chinese and foreign governments. It serves as a flagship project for investment cooperation between China and Malaysia and a demonstration zone for China-ASEAN cooperation, focusing on the development of electronic information, advanced manufacturing, new energy and new materials, biopharmaceuticals, grain, oil and food, big data and new economy, cross-border finance, and headquarters economy, among others.



## 中国(广西)自由贸易试验区钦州港片区

### The Qinzhou Port Area of the China (Guangxi) Pilot Free Trade Zone

The Qinzhou Port Area of the China (Guangxi) Pilot Free Trade Zone was established in August 2019 with the approval of the State Council, covering a core area of 58.19 square kilometers and a functional area of 207 square kilometers. It consists of three national-level parks, namely China-Malaysia Qinzhou Industrial Park, Guangxi Qinzhou Bonded Port Area (Qinzhou Comprehensive Bonded Zone), and Qinzhou Port Economic and Technological Development Zone.



## 钦州港经济技术开发区

### Qinzhou Port Economic and Technological Development Zone

In November 2010, Qinzhou Port Economic and Technological Development Zone was approved by the State Council to be upgraded into a national-level development zone, with an area of 152 square kilometers. It focuses on the development of industries such as green chemicals, new energy and new materials, equipment manufacturing, grain and oil, pulp and paper, modern logistics, and export processing. A number of renowned domestic and international companies have set up in the zone, including China National Petroleum Corporation, Shanghai Huayi Holding Group, Hengyi Petrochemical, Tongkun Group, China State Shipbuilding Corporation, COFCO Group, State Development and Investment Corporation, CNGR Advanced Material, Sinar Mas Group, The Linde Group, Royal Vopak, and Albemarle Corporation.



## 广西钦州综合保税区

### Qinzhou Comprehensive Bonded Zone

As the sixth bonded port area in China, Guangxi Qinzhou Bonded Port Area was officially established on May 29, 2008 with the approval of the State Council. In May 2020, the State Council approved the comprehensive upgrading of Guangxi Qinzhou Bonded Port Area into Qinzhou Comprehensive Bonded Zone, which officially started operations in December 2021. The zone focuses on the development of various forms of business, including processing trade, bonded logistics, shipping logistics, international trade, bulk commodity trading, bonded futures delivery, diversified processing services, and automobile bonded trade, and strives to build centers for manufacturing, processing, distribution, and sales services.



北部湾

三娘湾旅游度假区

## 发展优势 DEVELOPMENT ADVANTAGES

### Unique Geographic Location

- Backed by southwest China, adjacent to Guangdong, Hong Kong, and Macao, and facing Southeast Asia
- A sea-rail transportation hub in the New International Land-Sea Trade Corridor under the Belt and Road Initiative
- The geographic center and core development area of the Beibu Gulf Economic Rim
- The most convenient passage linking southwest China with ASEAN countries

### International Gateways

- A large deep water port with little risk
- An international regional shipping center
- A major container hub
- A bulk cargo (mineral products) port
- An important coal distribution port in China
- A major port for crude oil and petrochemical product trading
- A base for China-ASEAN Port City Cooperation Network
- A sub-center of CHINA-ASEAN Information Harbor
- The 30th largest container port in the world

### Open Ports

- A vehicle import port
- A fruit import port
- A grain import port
- A live cattle import port
- A national demonstration zone for famous imported alcohol brands
- A parallel automobile import port
- A meat import port
- A raw bird's nest import port
- A pilot city for cross-border e-commerce

## 交通便捷 CONVENIENT TRANSPORTATION



### Road Transportation

The Pilot Free Trade Zone has access to a well-developed expressway network. It is connected to the Liujing-Qinzhou Expressway in the east and the Nanning-Beihai Expressway in the north. It is linked with major inland cities of China through five expressways running across Nanning, Beihai, Fangchenggang (Dongxing), Congzuo and Liujing and is connected to ASEAN countries through the Asian Highway Network.

### Rail Transportation

As a sea-rail transportation hub in the New International Land-Sea Trade Corridor and a national key railway container center, the Pilot Free Trade Zone enjoys convenient rail transportation. It has direct access to port terminals and is connected to the national railway network through railway lines running across cities such as Nanning, Beihai, and Fangchenggang and the sea-rail intermodal transportation system.

### High-speed Rail Transportation

It only takes about half an hour to travel from the Pilot Free Trade Zone to Nanning, Beihai, and Fangchenggang by high-speed rail, and three hours to reach cities such as Guangzhou and Shenzhen. In the future, high-speed rail may take passengers from the Pilot Free Trade Zone to cities such as Guiyang, Kunming, and Changsha within three hours.

### Air Transportation

The Pilot Free Trade Zone is only one-hour drive away from Nanning Wuxu International Airport and Beihai Fucheng Airport and 20-minute drive away from the newly planned Beibu Gulf International Airport.

### River-sea Transportation

China's first automated container terminal for sea-rail intermodal transportation has been built in the Pilot Free Trade Zone, covering all major foreign trade routes to Southeast Asia and Northeast Asia and all domestic trade routes along the eastern coast. The Pinglu Canal facilitates the connection between river and sea transportation systems, serving as a more economical and convenient passage to the sea for Guangxi as well as the southwest, central-south, and northwest regions.



### Green Chemicals

The Pilot Free Trade Zone has attracted many renowned domestic and international chemical companies, including China National Petroleum Corporation, Shanghai Huayi Holding Group, Hengyi Petrochemical, Tongkun Group, Royal Vopak, Praxair, and Suez. It focuses on introducing projects related to the four RMB 100 billion-level industrial chains, namely high-end olefin materials, chemical fiber textiles, fine chemicals, and new energy materials, as well as projects related to the "4+1" characteristic energy and chemical service industrial chain, aiming to build a diversified petrochemical industry system with equal emphasis on "oil, coal, gas, and salt".



### Equipment Manufacturing

The Pilot Free Trade Zone has attracted well-known domestic equipment manufacturing companies such as China State Shipbuilding Corporation, Envision Group, and KingFrom Technology. It focuses on introducing projects related to offshore engineering equipment, wind power equipment, petrochemical equipment, intelligent equipment, automobile, and ultra-high-voltage power transmission equipment industrial chains, hoping to build a RMB 100 billion-level equipment manufacturing industry base.



### New Energy and New Materials

The Pilot Free Trade Zone has attracted famous domestic and international new energy and new material companies such as CNGR Advanced Material, Greatpower Technology, and Albemarle. Leveraging advantages in upstream raw material such as manganese salt, lithium salt, and nickel salt, as well as ternary lithium battery precursors and lithium iron phosphate, it focuses on introducing projects related to upstream and downstream industrial chains covering lithium battery cathode materials, anode materials, separators, electrolytes, and power batteries, with the goal of building a RMB 100 billion-level new energy material industrial base.



### Electronic Information

The Pilot Free Trade Zone focuses on introducing projects related to industrial chains covering electronic chemical materials, electronic metal materials, semiconductor materials, PCB materials, liquid crystal materials, chips, key components, display modules, printed circuit boards, glass substrates, camera modules, antenna modules, display panel modules, and smart terminals, aiming to accelerate the construction of a base for China-ASEAN Port City Cooperation Network.



### Biological Medicine

By leveraging the approval and tax advantages, the Pilot Free Trade Zone focuses on introducing such industrial chain projects as traditional Chinese medicinal material trade, instrument materials and components, pharmaceutical intermediates, traditional Chinese medicine preparations, chemical-pharmaceutical preparations, medical devices, medical and healthcare products, high-end food, drug and equipment circulation business, internet hospitals, etc., to build the China-ASEAN biological medicine industry base.

### International Trade

The Pilot Free Trade Zone prioritizes the development of bulk commodity trade bases represented by crude oil, manganese ore, and pulp; national foreign trade transformation and upgrading bases represented by processing industries of grain and edible bird's nest; logistics distribution bases represented by meat, fruit, and live cattle business; cross-border trade bases represented by bonded futures delivery, cross-border e-commerce, parallel import vehicles, and new offshore international trade.



### Port Shipping Logistics

With the advantages of the sea-rail transportation hub of the New International Land-Sea Trade Corridor, the Pilot Free Trade Zone focuses on introducing modern intelligent logistics parks, cold-chain logistics, petrochemical logistics, shipping services, comprehensive port services, logistics information platforms, and other projects to build a regional international logistics hub.

### Wood Pulp & Papermaking

Relying on the pulping and papermaking enterprise of Guangxi Jingui Pulp & Paper Co. Ltd., the Pilot Free Trade Zone will focus on introducing upstream and downstream industrial chain projects, such as timber trade, woodworking machinery, smart home appliances, high-end packaging paper, etc., to build a new science and technology environmental protection pulp and paper industrial park.



### Modern Service Industry

The Pilot Free Trade Zone will focus on introducing projects in sectors such as headquarters economy, platform economy, financial services, big data, e-commerce, health and wellness tourism, high-end hotels, cultural creativity, education, medical care, real estate, etc.



### Food Processing

Relying on the China-Malaysia "Two Countries, Twin Parks" cooperation mechanism and China's first cross-border industrial chain of bird's nest, the Pilot Free Trade Zone focuses on establishing the brand of "good bird's nest, made in Qinzhou" and expanding and strengthening its bird's nest processing industry. It will give priority to introducing food processing projects such as condiments, fruit products, puffed food, candy products, beverages, leisure snacks, aquatic products, flour products, dairy products, soybean products, vegetable products, poultry meat products, cooking oil, ready-to-cook dishes, etc.



## Policies for Border and Port Industrial Parks

1. From 2023 to 2029, there will be a phased rebate of the central government's share of the corporate income tax paid by manufacturing enterprises and the individual income tax paid by their employees (a full rebate from 2023 to 2026, and a 50% rebate from 2027 to 2029).
2. Manufacturing enterprises within comprehensive bonded zones will receive preferential tax policies such as exemption from value-added tax or tax rebates.
3. The policy to reduce or waive six local taxes and two fees will continue to be implemented until December 31, 2027.

## Support Policies for China-Asean Industrial Cooperation Zone

From 2023 to 2030, the corporate enterprises that settle in the China-ASEAN Industrial Cooperation Zone and transfer their industries will be exempted from corporate income taxes to local authorities for the first five years after they generate the first business revenue. From the sixth year to the tenth year, the tax amount will be reduced by half. The policy to reduce or waive six local taxes and two fees will continue to be implemented until December 31, 2027.

## Financial Innovation Policy of Zhongma Qinzhou Industrial Park

### Facilitation of the two-way flow of cross-border RMB

Enterprises that are willing to invest in the "Two Countries, Twin Parks" project, if recommended by the China-Malaysia Qinzhou Industrial Park Management Committee or recognized as a whitelisted enterprise by pilot banks, can directly handle various RMB businesses, such as cross-border financing for direct investment under capital account and other investments, with payment orders. They do not need to submit authenticity review materials in advance on a case-by-case basis.

### Cross-border RMB interbank financing

Pilot banks are allowed to provide RMB funds for interbank financing to Malaysian banks under the macro-prudential management framework, so as to provide RMB liquidity support for Malaysian banks to serve the construction of Malaysia-China Kuantan Industrial Park and the production, operation, and development of enterprises in the industrial park.

### Overseas RMB loans

Pilot banks are allowed to provide RMB loans for the Malaysia-China Kuantan Industrial Park project on the basis of knowledge of clients and business and due diligence, including but not limited to direct investment, contracted projects, and other projects.

### Simplification for the offshore transfer business of RMB NRA accounts

The offshore transfer business between RMB NRA accounts opened in pilot banks and offshore accounts opened in Malaysia can be directly handled following clients' orders, except as otherwise stipulated by the People's Bank of China.

### Cross-border transfer of domestic credit assets

The RMB credit asset transfer business will be piloted. In accordance with the principles of risk control and macro-prudence, pilot banks are allowed to carry out external transfers of RMB credit assets, including non-performing bank assets and trade financing.

## Land Element Price

- Industrial land: about RMB 200000-450000/mu (net land's actual price shall be subject to the bidding, auction and listing price).
- Land for warehousing and logistics: about RMB 320000-500,000/mu (net land's actual price shall be subject to the bidding, auction and listing price).
- Commercial land: about RMB 1.5-2.5 million/mu (net land's actual price shall be subject to the bidding, auction and listing price).

## Price of Water, Electricity and Gas

1.Price of non-residential domestic water (RMB per cubic meter)

Water supply area	Basic water price	Sewage treatment fee	Water resources cost
In the Free Trade Zone	1.7	1.4	0.1

2.Electricity price

Classification of Electricity Consumption (RMB/kWh)		Voltage class	Settlement according to the electricity price in the power grid catalog
Electricity for industry, commerce and other purposes	Two-part tariff	1-10 kV	0.6261
		35 kV and above	0.6011
		110 kV	0.5761
		220 kV and above	0.5561

3.Non-residential gas price RMB5.76/m<sup>3</sup>( Government-guided price)

4.Steam price about RMB200/ton(Fluctuate up and down depending on the conveying distance and pipe diameter)

## Human Resources and Costs

Human resources The city has a labor force of about 2.3 million, including about 1 million migrant workers in the Greater Bay Area. There are about 60,000 undergraduates and vocational school students, with more than 20,000 graduates every year.

Labour price Minimum wage standard in Qinzhou City: RMB 1,990/month Minimum salary standard for management/technical personnel: about RMB 4,000/month Average salary of employees on ordinary production lines: RMB 3,000-3,500/month

## Social insurance

Types of social insurance premium	Paid by the company (According to the proportion of payment base)	Paid by employees (According to the proportion of payment base)
Endowment insurance	16.0%	8.0%
Unemployment insurance	0.50%	0.5%
Medical insurance (including maternity insurance)	8.40%	2.0%
Employment injury insurance	0.20%-1.90% (By industrial injury risk category)	Non-payment
Total	25.1%-26.8%	10.5%

## Beibu Gulf Container Shipping Line(Excerpt)

	Shipping company	Route port of call	Schedule	Ship type (TEU)
foreign trade	Mediterranean Shipping Company (MSC)	Qinzhou-Hong Kong-Shanghai-Ningbo-Laem Chabang-Klang-Singapore-TanjungParapas-Surabaya-Jakarta-Singapore-Tanjung Parapas-Qinzhou	Sunday	3900
	site	Qinzhou-Haiphong-Laem Chabang-Kuantan-Jakarta-Laem Chabang-Qinzhou	Monday	1032
		Qinzhou-Shekou-Xiamen-Ningbo-Incheon-Dashan-Qingdao-Shanghai-Ho Chi Minh-Sihanoukville Autonomous Port-Bangkok-Laem Chabang-Haiphong-Qinzhou	Cut-off on Wednesday, departure on Thursday	1800
		Qinzhou-Hong Kong-Manila-Haiphong-Qinzhou	Cut-off on Wednesday, departure on Thursday	1032

	Shipping company	Route port of call	Schedule	Ship type (TEU)
foreign trade	SITC	Qinzhou-Shanghai-Tokyo-Kawasaki-Yokohama-Shimizu-Busan-Ulsan-Shanghai-Haiphong-Qinzhou	Monday	1400
		Qinzhou-Ho Chi Minh-Jakarta-Semarang-Surabaya-Laem Chabang-Ho Chi Minh-Batangas-Manila-Nansha-Shekou-Qinzhou	Thursday	1800
		Qinzhou-Haiphong-Nansha-Shekou-Haiphong-Qinzhou	Weekly	1000
		Qinzhou-Ho Chi Minh-Laem Chabang-Batangas-Manila North-Subic-Nansha-Shekou-Haiphong-Qinzhou	Monday	1100
		Qinzhou-Haiphong-Yishan-Nansha-Shekou-Qinzhou	Saturday	1000
		Qinzhou-Ho Chi Minh-Kuching-Bintulu-KK-Ho Chi Minh-Qinzhou	Thursday	1000
		Qinzhou-Haiphong-Nagoya-Tokyo-Sendai-Qinzhou	Weekly	1000
	Wan Hai Lines (WHL)	Qinzhou-Hong Kong-Shekou-Xiamen-Mojiko-Hakata-Ulsan-Busan-Gwangyang-Keelung-Kaohsiung-Hong Kong-Haiphong-Qinzhou	Thursday	1400
	Pacific International Lines (PIL)	Qinzhou-Singapore-Laem Chabang, Thailand-Sihanoukville-Qinzhou	Thursday	800
		Qinzhou-Zhanjiang-Quy Nhon, Vietnam-Singapore-Haiphong, Vietnam-Qinzhou	Friday	1880
		Qinzhou-Haiphong-Ho Chi Minh-Laem Chabang-Qinzhou	Bi-weekly service	800
	Evergreen Marine Corporation (EMC)	Qinzhou-Zhanjiang-Hong Kong-Shekou-Ho Chi Minh-Sihanoukville-Laem Chabang-Hong Kong-Haiphong-Qinzhou	Sunday	1600
	China COSCO Shipping Corporation Limited (COSCO Shipping)	Qinzhou-Haiphong-Singapore-Xiaochantan-Qinzhou	Monday	1100
		Qinzhou-Hong Kong-Nansha-Da Nang-Ho Chi Minh-Xiaochantan-Qinzhou	Sunday	1400
		Qinzhou-Hong Kong-Kaohsiung-Xiamen-Hong Kong-Nansha-Shekou-Singapore-Port Klang West-Durban-Cape Town-Port Klang West-Singapore-Qinzhou	Monday	4250
		Tianjin-Qingdao-Shanghai-Ningbo-Nansha-Singapore-Klang-Durban-Port Elizabeth-Klang-Qinzhou-Hong Kong-Tianjin	Sunday	4250
		Qinzhou-Hong Kong-Qingdao-Shanghai-Ningbo-Shekou-Singapore-Itaguai (Brazil)-Santos (Brazil)-Paranagua (Brazil)-Itapoa (Brazil)-Navegantes (Brazil)-Santos (Brazil)-Singapore-Qinzhou	Saturday	5000
		Qinzhou-Hong Kong-Ningbo-Shanghai-Port Prince Rupert, Canada-Vancouver-Seattle-Yantian-Qinzhou	Thursday	10000
		Qinzhou-Hong Kong-Xiamen-Tokyo-Yokohama-Nagoya-Mojiko-Yantian-Nansha-Hong Kong-Haiphong-Qinzhou	Tuesday	1800
		Qinzhou-Haiphong-Yangpu-Qinzhou	Friday	1800
		Qinzhou-Yangpu-Singapore-Chittagong-Singapore-Qinzhou	Friday	1600
	CK Line	Incheon-Busan-Hong Kong-Haiphong-Qinzhou-Hong Kong-Xiamen-Incheon	Sunday	1000
		Qinzhou Port—Haiphong—Bangkok—Laem Chabang—Qinzhou Port—Hong Kong—Qinzhou Port	Tuesday	560
	Ocean Longevity	Qinzhou-Qi River, Vietnam (Sanxie Port)	Irregular service	224
	Maersk Sealand/Wan Hai Lines/YangMing Marine Transport	Qinzhou-Ningbo-Shanghai-Sihanoukville-Bangkok-Laem Chabang-Qinzhou	Friday	1800
	ZIM Integrated Shipping Services (ZIM)	Qinzhou-Dachanwan-Klang-Chittagong-Klang-Haiphong-Qinzhou	Bi-weekly service	1131
		Qinzhou-Klang-Chittagong-Chennai-Klang-Ho Chi Minh-Haiphong-Qinzhou	Bi-weekly service	1012
Mariana Express Lines (MELL)	Qinzhou-Hong Kong-Kaohsiung-Guam-Saipan-Yap Island Port-Korol Port-Qinzhou	Irregular service	800	
CMA CGM	Qinzhou-Hong Kong-Nansha-Haiphong-Yishan-Qinzhou	Wednesday	1000	
T.S. Lines	Qinzhou-Shekou-Hong Kong-Tokyo-Yokohama-Nagoya-Yokkaichi-Osaka-Kobe-Keelung-Taichung-Kaohsiung-Hong Kong-Shekou-Haiphong-Qinzhou	Thursday	1049	
ASEAN SEAS LINE (ASL)	Qinzhou-Nansha-Hong Kong-Haiphong-Qinzhou	Friday	800	
Guangxi Qinzhou Hongyan International Shipping Agency Co., Ltd.	Quy Nhon, Vietnam-Qinzhou-Quy Nhon, Vietnam	Irregular service	100	
Hai'an Shipping	Qinzhou-Haiphong-Da Nang-Ho Chi Minh-Da Nang-Haiphong-Qinzhou	Weekly	800	
Harbour-Link	Qinzhou-Hong Kong-Kota Kinabalu-Murrals-Bintulu-Qinzhou	Monthly	700	
Beigang Logistics	Qinzhou-Hong Kong	Daily	200-250	
Universal Shipping	Qinzhou-Hong Kong	2-3 Sailings	200	
Beihai Haochen International Logistics Co., Ltd.	Qinzhou-Hong Kong	Tuesday/Friday	90	
Xiamen Dada Shipping Co., Ltd.	Qinzhou-Hong Kong	Irregular service	158	



## Public Price of Sea–Rail Intermodal Transport along the New International Land–Sea Trade Corridor in Beibu Gulf West (excerpt)

Rate of sea-rail intermodal freight trains for domestic and foreign trade heavy containers in Qinzhou Port (self-provided container/railway container)

Province of arrival	Destination city	Destination point	Departure point	Domestic and foreign trade	Container type	Rate (RMB/container)		
						Floating goods	Unfloated goods	
Chongqing	Chongqing	Tuanjie Village Container Yard (CY)	Qinzhou Port Wharf CY	Domestic and foreign trade	20GP	2800	4500	
					40GP	4500	6550	
Qinzhou	Qinzhou	Qinzhou Port Wharf CY	Tuanjie Village Container Yard (CY)	Domestic and foreign trade	20GP	2800	4500	
					40GP	4500	6550	
Sichuan	Chengdu	Chengxiang CY	Qinzhou Port Wharf CY	foreign trade	20GP	3400	5750	
					40GP	4400	7550	
				Domestic	20GP	3700	6050	
					40GP	4700	7850	
		Gongxing Airport Dedicated Line Railway Yard (RY)	Qinzhou Port Wharf CY	foreign trade	20GP	3650	5300	
					40GP	4650	5300	
				Domestic	20GP	3700	5350	
					40GP	4700	5350	
		Qingbaijiang	Qinzhou Port Wharf CY	foreign trade	20GP	3500		
					40GP	4500		
				Domestic	20GP	3900		
					40GP	4900		
Puxing Freight Yard RY	Qinzhou Port Wharf CY	foreign trade	20GP	3500	5450			
			40GP		6900			
		Domestic	20GP	3800	5750			
			40GP		7200			
Puxing Special Line RY	Qinzhou Port Wharf CY	foreign trade	20GP	3350	5250			
			40GP		6600			
		Domestic	20GP	3650	5550			
			40GP		6900			
Yunnan	Kunming	Taohua Village RY Wangjiaying West RY /Qinglongsi Special Line RY	Qinzhou Port Wharf CY	foreign trade	20GP	3650	4250	
					40GP	4000	4900	
				Domestic	20GP	4200	4800	
					40GP	4600	5500	
		Jinma Village Special Line RY/Zhongyi Village Special Line RY/Dushupu Special Line RY	Qinzhou Port Wharf CY	foreign trade	20GP	3500	4050	
					40GP	3800	4600	
				Domestic	20GP	4050	4600	
					40GP	4400	5200	
		RYYiliang North RY	Qinzhou Port Wharf CY	foreign trade	20GP	3400	3950	
					40GP	3950	4750	
				Domestic	20GP	3900	4450	
					40GP	4500	5300	
Qidian Special Line RY	Qinzhou Port Wharf CY	foreign trade	20GP	3250	3750			
			40GP	3750	4450			
		Domestic	20GP	3750	4250			
			40GP	4300	5000			
Tangzi RY	Qinzhou Port Wharf CY	foreign trade	20GP	3400	3950			
			40GP	3950	4750			
		Domestic	20GP	3900	4450			
			40GP	4500	5300			
Guizhou	Guiyang	Gaimao RY	Qinzhou Port Wharf CY	foreign trade	20GP	2600	3150	
					40GP	2950	3700	
		Domestic		20GP	2900	3450		
				40GP	3300	4050		
Dulaying Special Line RY	Qinzhou Port Wharf CY	foreign trade	20GP	2500	3050			
			40GP					
		Domestic	20GP	2900	3450			
			40GP					
Gansu	Lanzhou	Lanzhou Dongchuan RY	Qinzhou Port Wharf CY	foreign trade	20GP	5800	8200	
					40GP	6000	8500	
				Domestic	20GP	6000	8400	
		40GP			6200	8700		
		Zhongchuan North RY		Qinzhou Port Wharf CY	foreign trade	20GP	6100	8550
						40GP	6350	8950
Domestic	20GP		6300		8750			
	40GP	6550	9150					
Shanxi	Xian	Xi'an International Port RY	Qinzhou Port Wharf CY		foreign trade	20GP	3800	5200
						40GP	4800	6650
				Domestic	40RF			
					20GP	3800	5200	
Hunan	Huailua	Huailua West RY	Qinzhou Port Wharf CY	foreign trade	20GP	4800	6650	
					40GP	2600	3150	
				Domestic	20GP	2950	3700	
					40GP	2800	3350	
				40GP	3200	3950		

Valid until December 2024



广西北部湾港

7-03



Welcome to  
Qinzhou Industrial Park  
中国—马来西亚钦州产业园区欢迎您

按国际规则办事

与世界经济接轨

Operating in Accordance  
with International Rules

Aligning with the World Economy



Investment Promotion Service Center of the Qinzhou  
Port Area of China (Guangxi) Pilot Free Trade Zone

📍 Address: 1 Zhongma Street, China-Malaysia Qinzhou  
Industrial Park, Qinzhou, Guangxi Zhuang Autonomous  
Region

☎ Tel.: 0777-5988848 (Investment Promotion Service  
Center of Qinzhou Port Area)

✉ Email: zsfwzx66@163.com